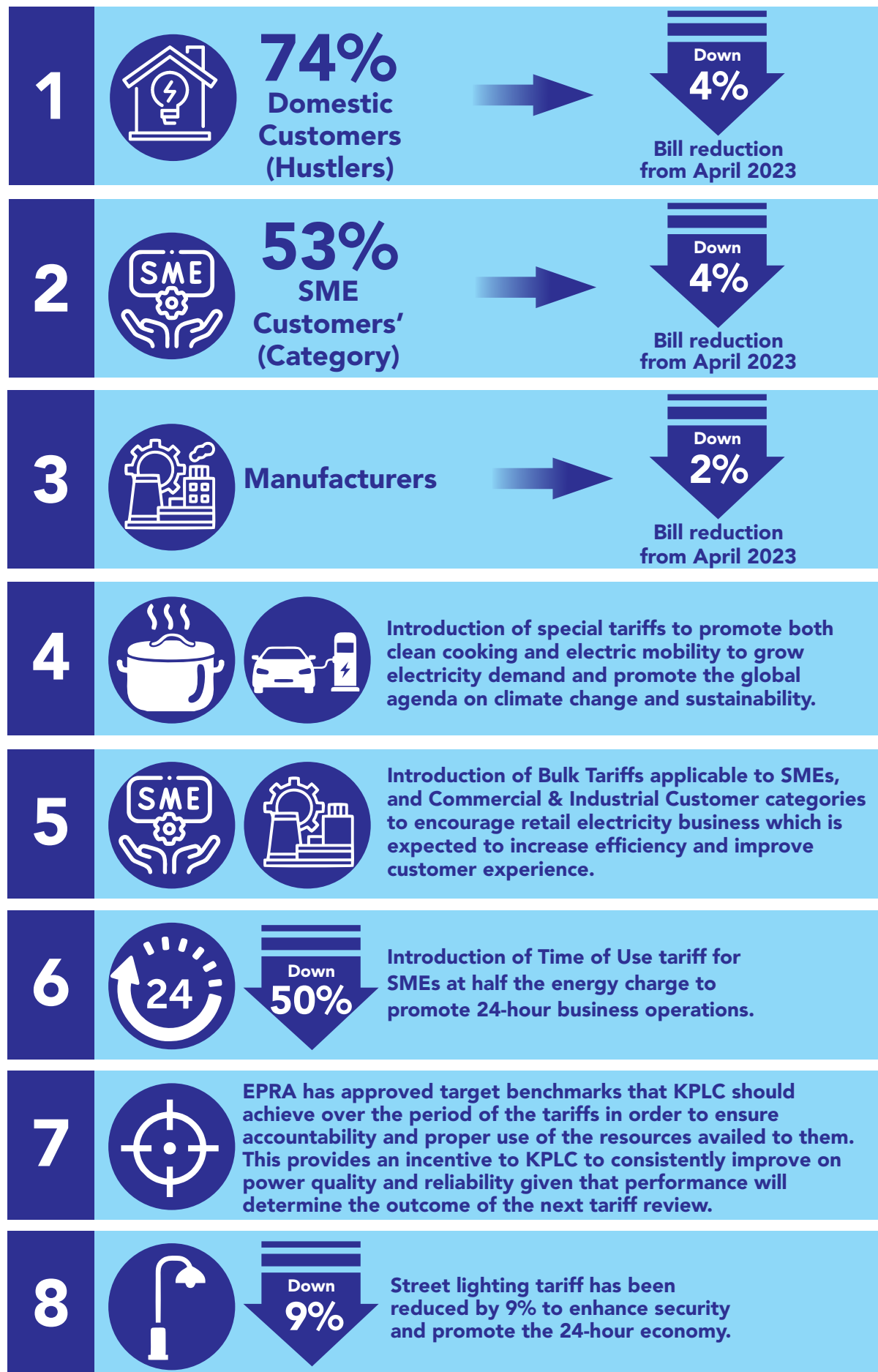


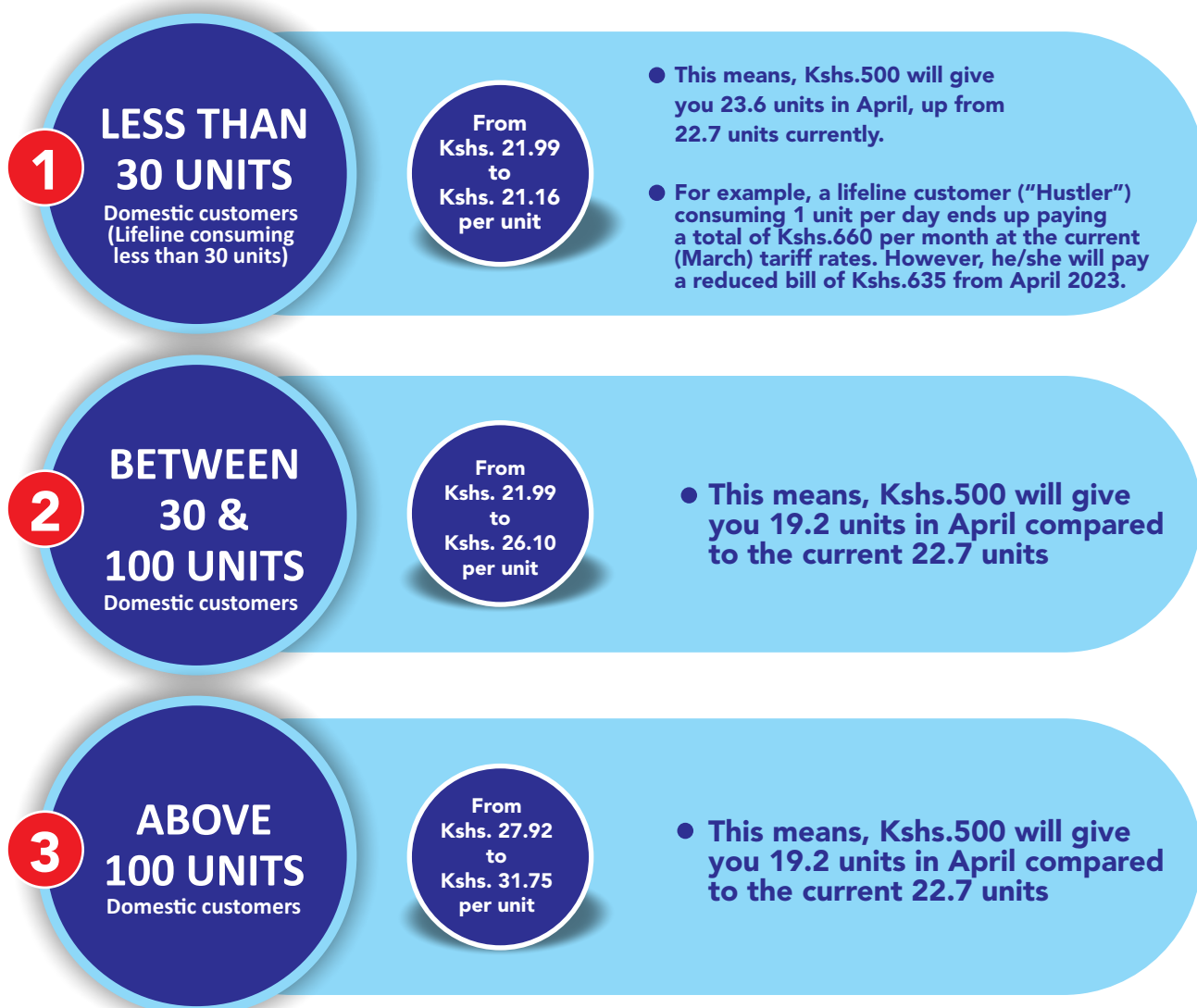
KEY HIGHLIGHTS OF THE ELECTRICITY TARIFFS AS APPROVED BY EPRA

Source: EPRA



WHAT WILL OUR DOMESTIC CUSTOMERS PAY IN THE NEW TARIFF APPROVED BY EPRA?

Source: EPRA



| Customer Group | Customer Band | March 2023 End-User Bill | April 2023 Approved End-User Bill | % Change | No. of Customers in every Group |
|----------------|---------------|--------------------------|-----------------------------------|----------|---------------------------------|
| DC | 0-30 | 21.99 | 21.16 | -4% | 6.3Million |
| | >30-100 | 21.99 | 26.10 | 19% | 1.5Million |
| | >100 | 27.92 | 31.75 | 14% | 609,243 |
| SC | 0-30 | 21.99 | 21.16 | -4% | 172,537 |
| | >30-100 | 21.99 | 26.22 | 19% | 70,199 |
| | >100 | 27.68 | 30.80 | 11% | 80,035 |
| CIs | CI1 | 25.72 | 27.62 | 7% | 3,118 |
| | CI2 | 23.14 | 23.29 | 1% | 533 |
| | CI3 | 23.57 | 23.35 | -1% | 81 |
| | CI4 | 22.86 | 22.39 | -2% | 47 |
| | CI5 | 22.18 | 21.47 | -3% | 57 |
| SL | SL | 19.33 | 17.53 | -9% | 19,283 |
| | | | | | 8,837,978 |

